

2009-06-30 Morning

SPS

is logged.

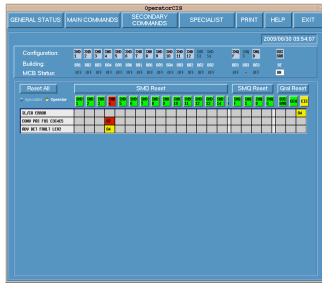
FILTER: Piquets  INFO

[NEW: For the mobile devices, try the eLogbook mobile beta v0.2](#)

#	Time	CL	NO	L	Comment
		GN	H		
		SG	C		
		11	2		
1	07:09				Yannick and Eric are in CCC, and almost ready for the coast beam. <i>Created by spsop from cwo-ccc-a7lc</i>
2	08:12				Beam stopped to prepare new supercycle <i>Created by spsop from cwo-ccc-a5lc</i>
3	08:18	SU			We prepared coastable beam : Mains switch off. CNGS : Stop Horn and Reflector, moved shutter. Launch sequence no extraction. SFTPro : Launch sequence no extraction, put 0 KV ZS. <i>Created by spsop from cwo-ccc-a5lc</i>
4	08:28	SU			Mains pulse start on LHC2. <i>Created by spsop from cwo-ccc-a7lc</i>
5	08:40	SU			Change Fixed Display: before, it's BCT3 and gain=0.6 <i>Created by spsop from cwo-ccc-a6lc</i>
6	09:00	SU			Compass has called: they want to wreboot the process dipGwExp on cs-ccr-cmw2. <i>Created by spsop from cwo-ccc-a6lc</i>
7	09:12	SU			We disable MDSH1197, because the corrector is pulsing <i>Created by spsop from cwo-ccc-a7lc</i>
8	09:16	SU			We have masked in SIS: MKD_early_Enable MKD_early_LHC_Veto MKD_Synchro_Delay_Early MKD_Synchro_Delay_FLTBot MKD_Synchro_Delay_Delay_Std Mall1001M_Cur_Intol Mbiv1003M_Cur_Intol MDSH1197_PC_State QID1011M_CUR_INTOL QIF1012M_CUR_INTOL <i>Created by spsop from cwo-ccc-a6lc</i>
9	09:27	SU			North area first line need to investigate the Persistant voltage, we put timing for north area from working set on LHC2. Remember to stop it after LHC2 used. <i>Created by spsop from cwo-ccc-a7lc</i>
10	09:48	SU			Alex Frassier informed us about an intervention for CNGS and North Area fan replacement.. <i>Created by spsop from cwo-ccc-a7lc</i>
					> Piquet SPS > PO Ring > Called Fuse faulty on SMD4 after coast recover.

11 09:54

SU



20090630095408.png

Created by spsop from cwo-ccc-a7lc

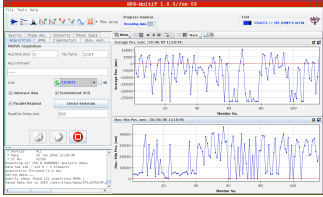
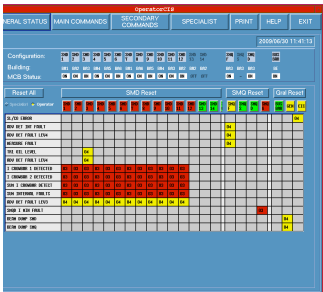
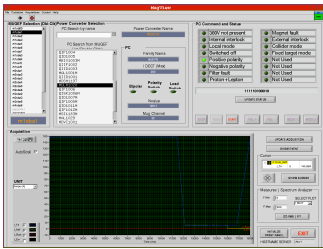
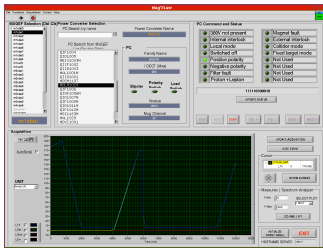
12 10:25



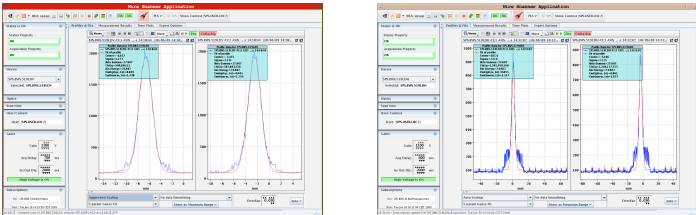
SU

We switch off manually all power converter CNGS :

```

Rocs.BA4.RBI.81607      (String:1) -> OFF
Rocs.BA4.RBIH.400107   (String:1) -> OFF
Rocs.BA4.RBIH.400309   (String:1) -> OFF
Rocs.BA4.RBIV.400293   (String:1) -> OFF
Rocs.BA4.RCIBH.400104  (String:1) -> OFF
Rocs.BA4.RCIBV.400097  (String:1) -> OFF
Rocs.BA4.RQID.400100   (String:1) -> OFF
Rocs.BA4.RQID.400300   (String:1) -> OFF
Rocs.BA4.RQIF.400200   (String:1) -> OFF
Rocs.BA4.RQIF.400400   (String:1) -> OFF
Rocs.BB4.RBI.410010    (String:1) -> OFF
Rocs.BB4.RBIH.412244   (String:1) -> OFF
Rocs.BB4.RBIH.412422   (String:1) -> OFF
Rocs.BB4.RBIV.412153   (String:1) -> OFF
Rocs.BB4.RBIV.412419   (String:1) -> OFF
Rocs.BB4.RCIBH.410206  (String:1) -> OFF
Rocs.BB4.RCIBH.410606  (String:1) -> OFF
Rocs.BB4.RCIBH.410806  (String:1) -> OFF
Rocs.BB4.RCIBH.411206  (String:1) -> OFF
Rocs.BB4.RCIBH.411406  (String:1) -> OFF
Rocs.BB4.RCIBH.411806  (String:1) -> OFF
Rocs.BB4.RCIBV.410306  (String:1) -> OFF
Rocs.BB4.RCIBV.410506  (String:1) -> OFF
Rocs.BB4.RCIBV.410906  (String:1) -> OFF
Rocs.BB4.RCIBV.411106  (String:1) -> OFF
Rocs.BB4.RCIBV.411506  (String:1) -> OFF
Rocs.BB4.RCIBV.411706  (String:1) -> OFF
Rocs.BB4.RQID.410100   (String:1) -> OFF
Rocs.BB4.RQID.410300   (String:1) -> OFF
Rocs.BB4.RQID.411700   (String:1) -> OFF
Rocs.BB4.RQID.411900   (String:1) -> OFF
Rocs.BB4.RQID.412100   (String:1) -> OFF
Rocs.BB4.RQID.412200   (String:1) -> OFF
Rocs.BB4.RQID.412400   (String:1) -> OFF
Rocs.BB4.RQIF.410200   (String:1) -> OFF
Rocs.BB4.RQIF.410400   (String:1) -> OFF
Rocs.BB4.RQIF.411800   (String:1) -> OFF
Rocs.BB4.RQIF.412000   (String:1) -> OFF
Rocs.BB4.RQIF.412300   (String:1) -> OFF
Rocs.MPSV4130         (String:1) -> OFF
Rocs.MPSH4140         (String:1) -> FAULT-OFF
Rocs.MPLV4150         (String:1) -> OFF
Rocs.MPLH4165         (String:1) -> OFF
Rocs.MSE4183M         (String:1) -> OFF
Rocs.MPLH4199         (String:1) -> OFF
Rocs.MPLV4210
Rocs.MPSH4219
  
```

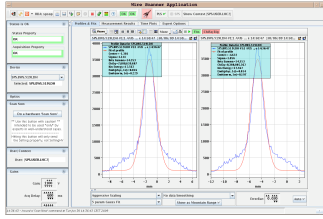
				Rocs.MPSV4230	Created by spsop from cwo-ccc-a7lc
13	10:55	SU		A. Frasier informed us that he has finished the fan changed in BB4.	Created by spsop from cwo-ccc-a7lc
14	11:16	SU		1000 Turn application with coast1.  1000Turn.png	Created by spsop from cwo-ccc-a6lc
15	11:23	SU		A. Frasier informed us that he has finished the fan changed in BA80	Created by spsop from cwo-ccc-a7lc
16	11:40	SU		Mains faulty during coast recover.  20090630114116.png	Created by spsop from cwo-ccc-a6lc
17	11:44	SU		TT10 2 PC faulty : Rocs.MAL1001M (String:1) -> FAULT-OFF Rocs.MDLH1028 (String:1) -> FAULT-OFF	Created by spsop from cwo-ccc-a6lc
18	11:47	SU		bmul0s is down. We reboot it.	Created by spsop from cwo-ccc-a6lc
19	11:57	SU		MAL1001 and MDLH1028 FAULT_OFF, internal interlock problem.  20090630120018.png  20090630120127.png	Created by spsop from cwo-ccc-a7lc
20	12:06	SU		> Piquet SPS > PO Ring > Called We contact Piquet PO	Created by spsop from cwo-ccc-a7lc
21	12:38	SU		> Piquet SPS > PO Ring > On Site	Created by spsop from cwo-ccc-a7lc

22	12:42	SU	<p>&gt; Piquet SPS &gt; RF POW &gt; End</p> <p style="text-align: right;">Created by spsop from cwo-ccc-a7lc</p>
23	12:49	SU	<p>MOPOS configuration before change</p>  <p style="text-align: center;">20090630124948.png</p> <p style="text-align: right;">Created by spsop from cwo-ccc-a6lc</p>
24	13:04	SU	<p>After scanning, we obtain this MOPOS delays (look at the capture)</p>  <p style="text-align: center;">20090630130445.png</p> <p style="text-align: right;">Created by spsop from cwo-ccc-a6lc</p>
25	13:05	SU	<p>We contact Stephen Page about MAL1001 problem with a 0 current when we starting it.</p> <p style="text-align: right;">Created by spsop from cwo-ccc-a7lc</p>
26	13:28	SU	<p>We contact R. Steinhagen about MOPOS calibration.</p> <p style="text-align: right;">Created by spsop from cwo-ccc-a7lc</p>
27	13:50	SU	<p>S. Page has modified the ROCS version in TT10. If someone will reboot another ROCS, it will take this new version. So, if a problem with that will happened, contact S. Page.</p> <p style="text-align: right;">Created by spsop from cwo-ccc-a2lc</p>
28	13:55	SU	<p>MOPOS scope setting</p>  <p style="text-align: center;">20090630135618.png</p> <p style="text-align: right;">Created by spsop from cwo-ccc-a7lc</p>
29	14:19	SU	<p>BWS meas. in pulsed mode.</p>  <p style="text-align: center;">519V.png                      519H.png</p>

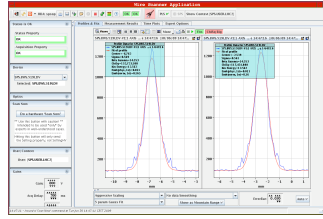
Created by spsop from cwo-ccc-a4lc

BWS meas. in "Scan now" mode

30 14:42 SU



BWSH519.png



BWSV519.png

Created by spsop from cwo-ccc-a4lc

FAULTS

#	Group	Fault	Element	Description	Begin	End	Duration
NO FAULT							

