

Tue 30 June 2009 3:00 PM Afternoon

SPS

emehat

is logged.

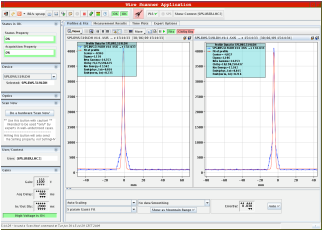
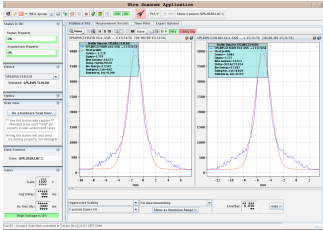
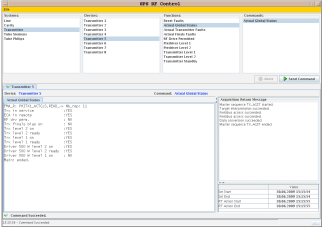
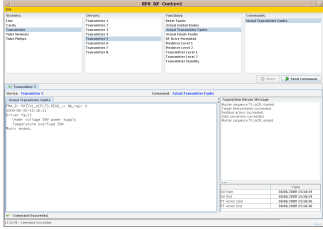
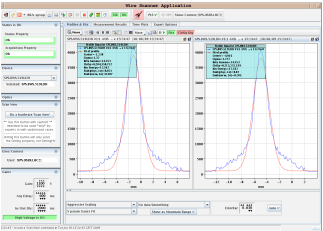
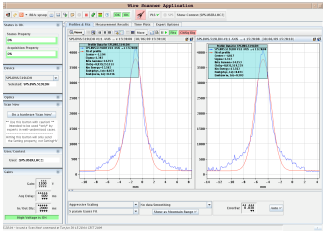
FILTER: Piquets

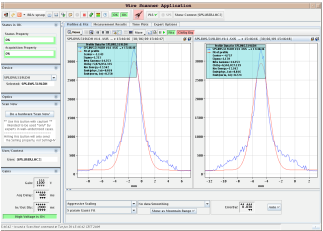
Expert

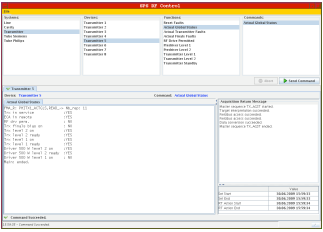
INFO

Clear

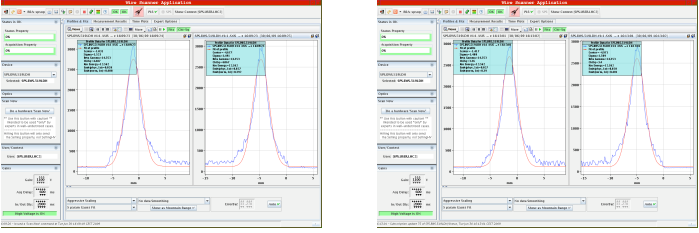
[NEW: For the mobile devices, try the eLogbook mobile beta v0.2](#)

#	Time	H C 2	Comment
1	15:00	SU	Guy & Serge <span style="float: right;">Created by spsop from cwo-ccc-a7lc</span>
2	15:07	SU	Lost beam while moving collimators in coast (we needed to mask the interlock). During coast recovery, Imin fault on SMQG, reset ok. <span style="float: right;">Created by spsop from cwo-ccc-a7lc</span>
3	15:12	SU	Back in coast. <span style="float: right;">Created by spsop from cwo-ccc-a7lc</span>
4	15:14	SU	More BWS data in coasts.  <div style="display: flex; justify-content: space-around;">   </div> <p style="text-align: center;">BWS519H.png                      BWSH519.png</p> <span style="float: right;">Created by spsop from cwo-ccc-a4lc</span>
5	15:15	SU	TRX5 and 8 trip during coast.  <div style="display: flex; justify-content: space-around;">   </div> <p style="text-align: center;">TRX5 Global Status.png                      TRX5 TRX Faults.png</p> <span style="float: right;">Created by spsop from cwo-ccc-a7lc</span>
6	15:24	SU	More BWS data in coasts.  <div style="display: flex; justify-content: space-around;">   </div> <p style="text-align: center;">BWSH519.png                      BWSH519.png</p> <span style="float: right;">Created by spsop from cwo-ccc-a4lc</span>
7	15:35	SU	Same SMQG problem during coast recovery. <span style="float: right;">Created by spsop from cwo-ccc-a7lc</span>

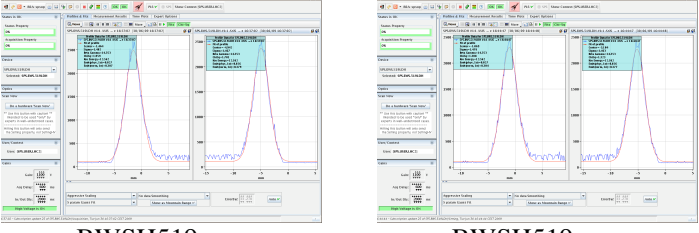
8	15:46 SU	<p>More BWS data in coasts.</p>  <p>BWSH519.png</p> <p style="text-align: right;"><a href="#">Created by spsop from cwo-ccc-a4lc</a></p>
---	----------	---

9	15:59 SU	<p>Trx5 tripped. See attached file.</p>  <p>20090630160008.png</p> <p style="text-align: right;"><a href="#">Created by spsop from cwo-ccc-a6lc</a></p>
---	----------	--

10	16:02 SU	<p>Trx5 ok after restarting it.</p> <p style="text-align: right;"><a href="#">Created by spsop from cwo-ccc-a6lc</a></p>
----	----------	--

11	16:09 SU	<p>More BWS data in coasts.</p>  <p>BWSH519.png      BWSH519.png</p> <p style="text-align: right;"><a href="#">Created by spsop from cwo-ccc-a4lc</a></p>
----	----------	---

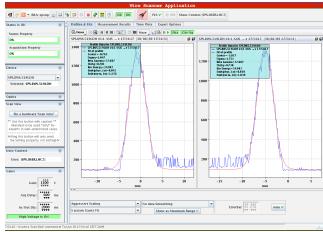
12	16:22 SU	<p>attention:fragilite du systeme MKDH. Intervention plannifiee demain matin.(piquet kicker).</p> <p style="text-align: right;"><a href="#">Created by spsop from cwo-ccc-a7lc</a></p>
----	----------	--

13	16:37 SU	<p>More BWS data in coasts (after collimators removed the tails).</p>  <p>BWSH519.png      BWSH519.png</p> <p style="text-align: right;"><a href="#">Created by spsop from cwo-ccc-a4lc</a></p>
----	----------	---

More BWS data (may be with some excitation... which should be here but we

14 17:55 SU

have no proof).

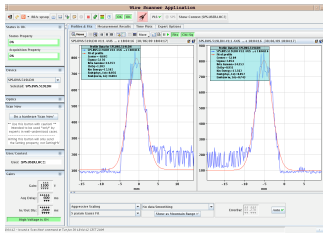


BWSH519.png

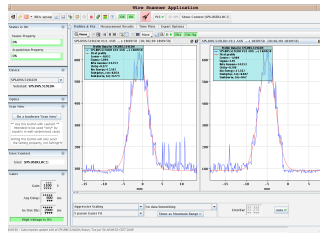
Created by spsop from cwo-ccc-a4lc

15 18:06 SU

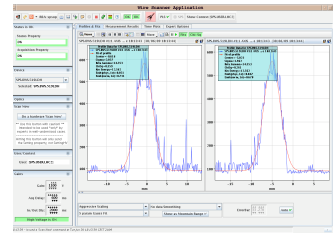
BWS data after excitation.



BWSH519.png



BWSH519.png

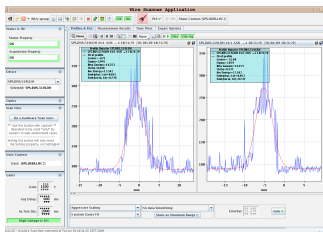


BWSH519.png

Created by spsop from cwo-ccc-a4lc

16 18:22 SU

More BWS data after excitation.

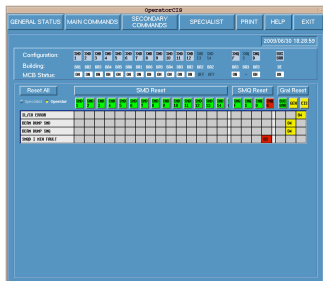


BWSH519.png

Created by spsop from cwo-ccc-a4lc

17 18:28 SU

When we recover the COAST, the SMQG is getting in SMQD Imin fault. See attached picture.



20090630182901.png

Created by spsop from cwo-ccc-a6lc

18 18:29 SU

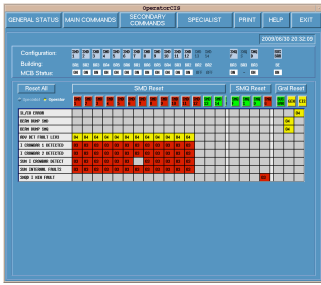
References before the coast.

Created by spsop from cwo-ccc-a4lc

bws of beam cut

19	18:38	SU	 <p>20090630183837.png</p> <p style="text-align: right;">Created by spsop from cwo-ccc-a4lc</p>
20	18:52	SU	<p>Reference for the last store.</p> <p>Orbit: /user/slops/data/SPS_DATA/OP_DATA/steering/sps/Ref-coast-2009-06-30-18-50</p>  <p>20090630185324.png</p> <p style="text-align: right;">Created by spsop from cwo-ccc-a4lc</p>
21	18:53	SU	<p>Wire scanner and tune reference at the beginning of the coast without excitation</p>  <p>Tunes meas.png</p> <p style="text-align: right;">Created by spsop from CWO-CCC-A2LF</p>
22	20:06	SU	<p>Position TAL 67.93 mm beam scraping Cristal position 78.921 mm No transverse dumper excitation.</p> <p style="text-align: right;">Created by spsop from cwo-ccc-a2lc</p>
23	20:09	SU	<p>Starting angular scan with crystal 1</p> <p style="text-align: right;">Created by spsop from cwo-ccc-a2lc</p>
24	20:13	SU	<p>Going 0.5 mm inside with the crystal. Lossing more at the TAL than at the crystal... like a two stage collimation system.</p> <p style="text-align: right;">Created by spsop from cwo-ccc-a2lc</p>
25	20:20	SU	<p>starting angular scan: -100 murad, +500murad, going up to +1000 murad . Looking to the minimum of the losses at the crystal and max at the tal.</p> <p style="text-align: right;">Created by spsop from cwo-ccc-a2lc</p>
26	20:27	SU	<p>New coast</p> <p style="text-align: right;">Created by spsop from cwo-ccc-a2lc</p>
			<p>SMQ fault after recovering. Surprise! See attached picture.</p>

27 20:31 SU

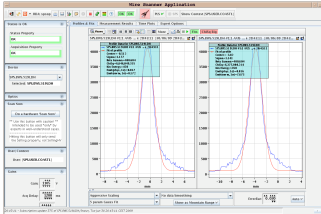


20090630203213.png

Created by spsop from cwo-ccc-a6lc

28 20:37 SU

bws at start coast



20090630204422.png

Created by spsop from CWO-CCC-A2LF

29 20:43 SU

New coast. See reference orbit and WS.

reference orbit:

/user/slops/data/SPS\_DATA/OP\_DATA/steering/sps/Ref-coast-2009-06-30-20-43

(several BLM crates missing but SS5 looks ok).

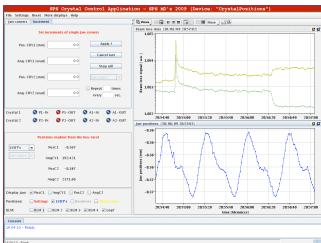


20090630204409.png

Created by spsop from cwo-ccc-alle

30 20:56 SU

LHC collimator moved out: TAL becomes the aperture bottleneck and acts as a primary collimator.

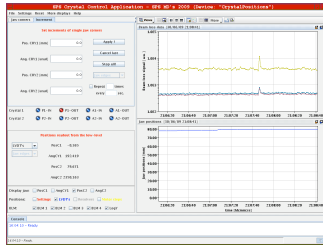


20090630205711.png

Created by spsop from cwo-ccc-alle

Crystal touched the beam. Is now closed than the beam than the TAL.

31 21:08 SU



20090630210849.png

Created by spsop from cwo-ccc-alle

32 21:10 SU

Tal out by 0.5mm without moving the crystal.

Created by spsop from cwo-ccc-alle

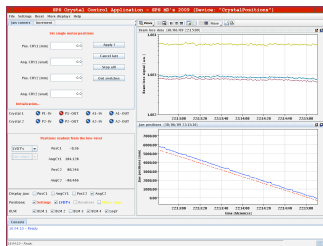
33 21:44 SU

We are doing an angular scan of crystal2.

Created by spsop from cwo-ccc-alle

Fast angle scan of crystal2 with slowest possible speed.  
Speed set to 40 steps / s.

34 22:14 SU

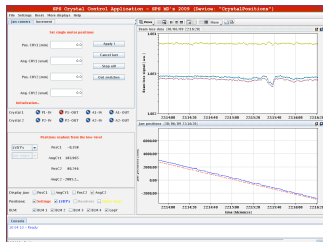


20090630221519.png

Created by spsop from cwo-ccc-alle

35 22:15 SU

Losses at the crystal go down. Channeling??  
~1300 umrad.

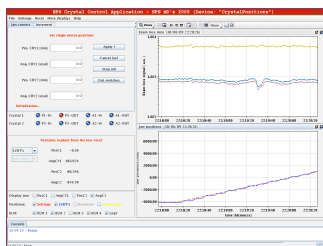


20090630221628.png

Created by spsop from cwo-ccc-alle

36 22:19 SU

Scan on the other direction. Seen the same reduction of losses at the BLM on the crystal. Indication of channeling!



20090630222033.png

Created by spsop from cwo-ccc-alle

Speed of angle change further reduced to 30 step / s. Make another scan.

37 22:33 SU



20090630223529.png

Created by spsop from cwo-ccc-alle

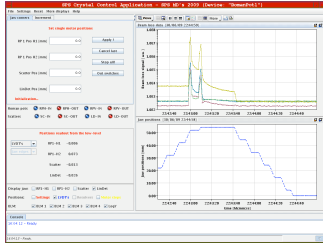
Now we put in the Cherenkov detector and then repeat a scan of the crystal angle.

38 22:40 SU

Created by spsop from cwo-ccc-alle

Beam lost due to the movement of the detector. Need to setup another coast.

39 22:44 SU

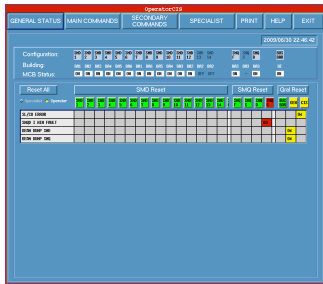


20090630224506.png

Created by spsop from cwo-ccc-alle

SMQ fault after recovering. See attached file.

40 22:46 SU



20090630224645.png

Created by spsop from cwo-ccc-a6lc

New coast.

Reference orbit: /user/slops/data/SPS\_DATA/OP\_DATA/steering/sps/Ref-coast-2009-06-30-22-52

41 22:52 SU

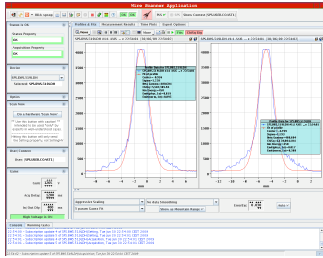


20090630225348.png

Created by spsop from cwo-ccc-alle

bws new coast

42 22:54 SU

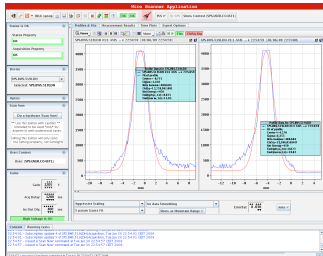


20090630225448.png

Created by spsop from CWO-CCC-A2LF

closing the collimator

43 22:55 SU

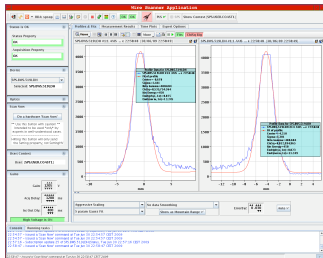


20090630225553.png

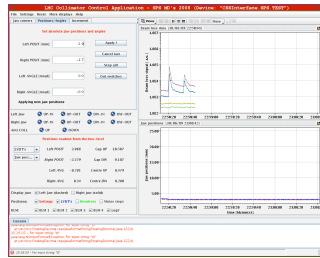
Created by spsop from CWO-CCC-A2LF

collimator centered

44 22:58 SU



20090630225935.png

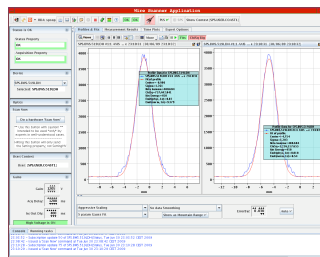
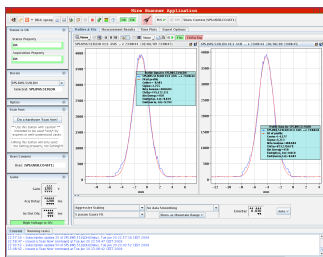


20090630230049.png

Created by spsop from CWO-CCC-A2LF

wire scanner before blow-up

45 22:59 SU





20090630231015.png

20090630231051.png

Created by spsop from CWO-CCC-A2LF

**FAULTS**

#	Group	Fault	Element	Description	Begin	End	Duration
---	-------	-------	---------	-------------	-------	-----	----------

NO FAULT

