

Thursday 18 June - 2009 Afternoon

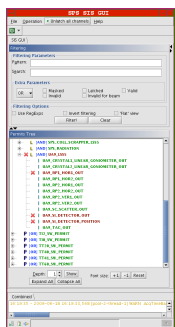
SPS

emeta

is logged.

FILTER: Piquets Expert INFO Clear

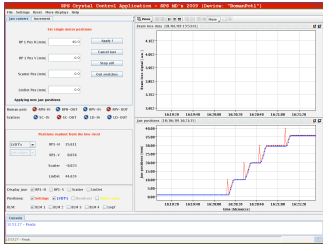
NEW: For the mobile devices, try the eLogbook mobile beta v0.2

#	Time	H C 1	Comment
1	15:00		Guy and Serge Created by spsop from cwo-ccc-a7lc
2	15:09		BI changing card for BLM monitors in BA5 Created by spsop from cwo-ccc-a6lc
3	15:10		> Piquet SPS > Magnets > Called Created by spsop from cwo-ccc-a6lc
4	15:16		> Piquet SPS > Magnets > On Site Water leak found on magnet MBB at location 533. Piquet going to check this in the tunnel. Created by spsop from cwo-ccc-a6lc
5	15:23		Following this morning's power cut, many EA power supplies appear in local control, and not readable. Problem with controls router. Alastair Bland checking this. Created by spsop from cwo-ccc-a6lc
6	15:32		Thomas Bohl checking timing for pre-coast table, disable events beamout and beam dump in table MTG_EVENTS_NEW and LEG, SPS.USER.COASTPR1 Created by spsop from cwo-ccc-a7lc
7	15:50		Jonathan Emery will go down in BA5 to investigate for the false measurement with BLM. He will be on site around 4pm. Created by spsop from cwo-ccc-a7lc
8	16:01		Alastair Bland checked the router: seems to be normal. He asked someone from PO to check the CPU in North Area. Created by spsop from cwo-ccc-a7lc
9	16:03		Carlos Lopez called for the water leak in BA5. They fix a volcanic bandaging to prevent the leak but it is not optimal. They have to solder the pipe. Unfortunately the leak doesn't come from a connexion. They need 2 hours of access to perform this task. Let us know when they can get in the tunel. Created by spsop from cwo-ccc-a7lc
10	16:07		EA North access control software not startable. Call D.Vaxellaire, who is checking this. Unable to set "end of access" for zone PPE118. Created by spsop from cwo-ccc-a6lc
11	16:19		UA9 interlock test: Roman pot 1 - H1 position -> ok!  Created by spsop from cwo-ccc-a0lc

20090618161954.png

12 16:21

Roman pot 1 - H1 on switch IN.



20090618162143.png

Created by spsop from cwo-ccc-a0lc

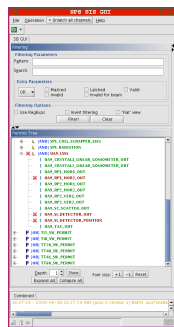
13 16:23

Zora EA North access software now ok. Serge going to close zone 118.

Created by spsop from cwo-ccc-a6lc

14 16:25

UA9 interlock test: Roman pot 1 - H2 position -> ok!

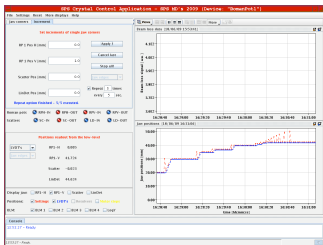


20090618162753.png

Created by spsop from cwo-ccc-a0lc

15 16:30

Roman pot 1 - H2: Switch IN.

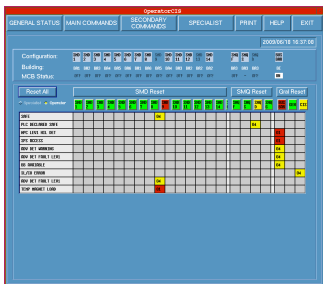


20090618163113.png

Created by spsop from cwo-ccc-a0lc

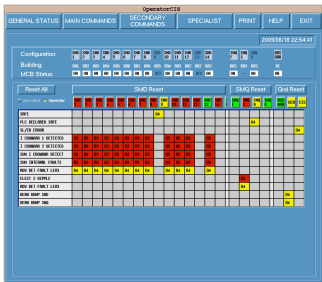
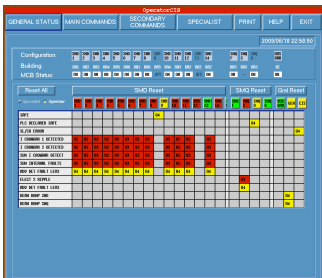
16 16:35

Temp magnet load fault on SMD9. Call PO piquet to check this.



20090618163711.png

			Created by spsop from cwo-ccc-a7lc
17	16:39	Problem to access most front end hosts via diamon. A.Bland checking this.	Created by spsop from cwo-ccc-a7lc
18	16:45	<p>UA9 interlock test: Scatter position -> ok!</p>  <p>20090618164609.png</p>	Created by spsop from cwo-ccc-a0lc
19	17:03	ECN3 2 searches broken. Serge going to help make the patrol.	Created by spsop from cwo-ccc-a7lc
20	17:13	Magnet piquet checked magnet temperature interlock on SMD9. All ok for him, but the interlock still appears on ths CIS software. Call PO piquet to check this (he is currently busy on the PSB).	Created by spsop from cwo-ccc-a7lc
21	17:30	v2nb81 front end chassis changed. We now seem to have full controls access to EA power supplies. TI checking auxilliary compensator.	Created by spsop from cwo-ccc-a6lc
22	18:20	BI people finished work on BLMS in LSS5. There is still some noise to be reduced on some of these monitors. Inform BI if 1 hour without beam.	Created by spsop from cwo-ccc-a6lc
23	18:59	Eda called: she asks to closed the shieldings. We close chain 6 for this. Ventillation tests overnight.	Created by spsop from cwo-ccc-a6lc
24	19:29	Vacuum people out of ring. Closing chain 1.	Created by spsop from cwo-ccc-a6lc
25	19:31	Call CO piquet. MTG events not arriving on north area hosts, v2nb80, v2nb81, v2nb82.	Created by spsop from cwo-ccc-a6lc
26	19:33	Valves open	Created by spsop from cwo-ccc-a6lc
27	19:47	TRX3 off, trying to restore it.	Created by spsop from cwo-ccc-a6lc
28	19:52	Piquet CO on site.	Created by spsop from cwo-ccc-a6lc
29	19:57	Running dry coast cycle for Thomas Bohl, RF timing.	Created by spsop from cwo-ccc-a6lc
30	20:00	<p>> Piquet SPS > RF POW > Called</p> <p>Unable to restart TRX3, UG2 driver no 380V. Call RF piquet C.Julie.</p>	Created by spsop from cwo-ccc-a6lc
31	20:15	<p>> Piquet SPS > RF POW > On Site</p>	Created by spsop from cwo-ccc-a6lc
32	20:33	TRX3 again available.	Created by spsop from cwo-ccc-a6lc
33	20:33	CO piquet checked timing cards on North area hosts, v2nb80,81,82. All functioning correctly, and no errors from diamon. It could be there is no timing set for the North area with the cycle we are currently running for the MD. So we are able to switch on pulsed converters in the north area,	

		but not set the currents.	Created by spsop from cwo-ccc-a6lc
34	20:45	> Piquet SPS > PO Ring > End	Created by spsop from cwo-ccc-a6lc
35	21:01	Problem with RF Rocs, which continues to pulse when we go into coast. We call first M.Jonker, then Stephen Page for advice. We find a configuration table for rocs under /user/pcsp/rocs/configuration/standard.evlist, which contains only RF configuration for pulsed mode. Stephen will edit this table later, so we can test if that is sufficient to cure the problem.	Created by spsop from cwo-ccc-a6lc
36	21:17	SIS interlock from blring_dump_veto_ba5 (BI were working on BLMs in BA5 earlier). Reboot blr50s	Created by spsop from cwo-ccc-a6lc
37	21:23	Mask the above SIS interlock.	Created by spsop from cwo-ccc-a6lc
38	21:41	Stephen Page arrived to check Rocs timing configuration for coast.	Created by spsop from cwo-ccc-a6lc
39	21:46	surveillance of BLRING in LSS5 unmasked again. REady to take beam, adjusting MKP timing.	Created by spsop from cwo-ccc-a6lc
40	21:51	Timing configuration edited for RF ROCS. We cut RF power and m3sba3 for this to take effect.	Created by spsop from cwo-ccc-a6lc
41	22:32	> INFO > SHIFT SUMMARY Vacuum intervention on UA9 delayed start with beam until 19:30. After some problems with RF ROCS timing when going into coast. Also trying to check EA power supplies, for tomorrow's return to physics, but unable to set currents on pulsed functions with the timing of the MD cycle. CNGS ventilation tests overnight, do not cut chain 6.	Created by spsop from cwo-ccc-a6lc
42	22:49	MPS trip, electrical ripple on SMQS. Reset ok	Created by spsop from cwo-ccc-a6lc
43	22:54	MPS trip again. See attached file.  20090618225443.png	Created by spsop from cwo-ccc-a7lc
44	22:58	MPS trip again after a third retry. 	

20090618225851.png

Created by spsop from cwo-ccc-a7lc

FAULTS

#	Group	Fault	Element	Description	Begin	End	Duration
---	-------	-------	---------	-------------	-------	-----	----------

NO FAULT

