

MD PLANNING FOR 2009

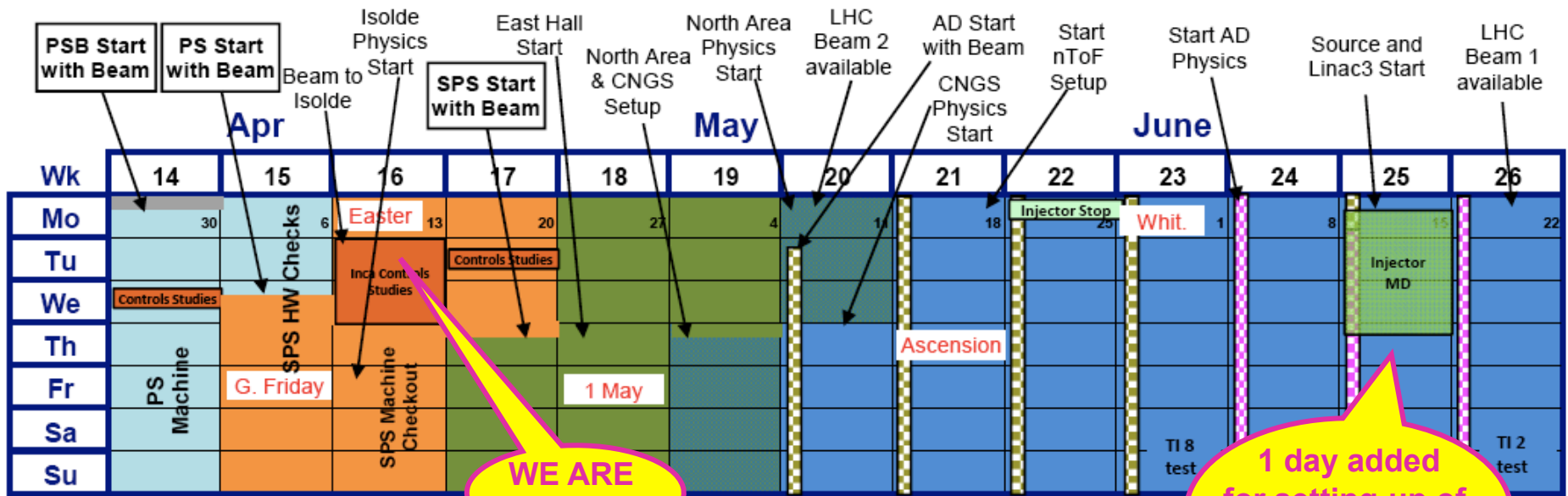
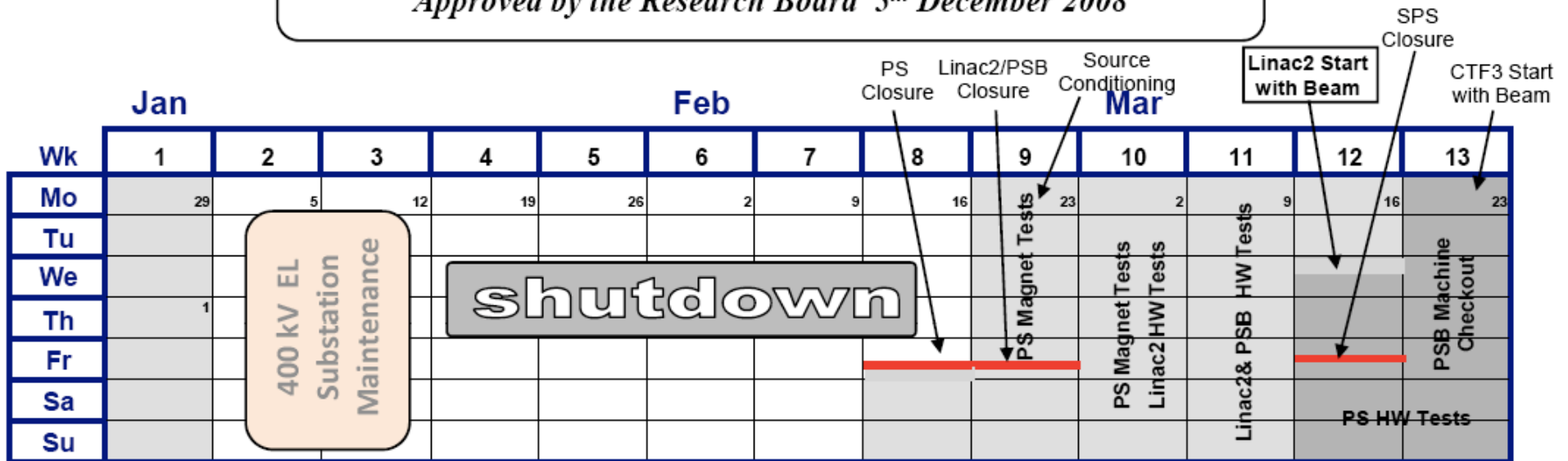
E. Métral

<https://ab-mgt-md-users.web.cern.ch/ab-mgt-md-users/>

- ◆ **In // to physics** (working days from 08:00 to 18:00): PSB/PS/SPS
→ From week 21 to 47
- ◆ **5 "Wednesday" dedicated MDs** (08:00 - 16:00)
→ Weeks 27, 31, 35, 39 and 43
- ◆ **6 3-day Injectors MDs** (72 h from 08:00 to 08:00). When there is an injector stop the MD will start only at 16:00
→ Weeks 25, 29, 33 (with inj. stop), 37, 41 and 45 (with inj. stop)

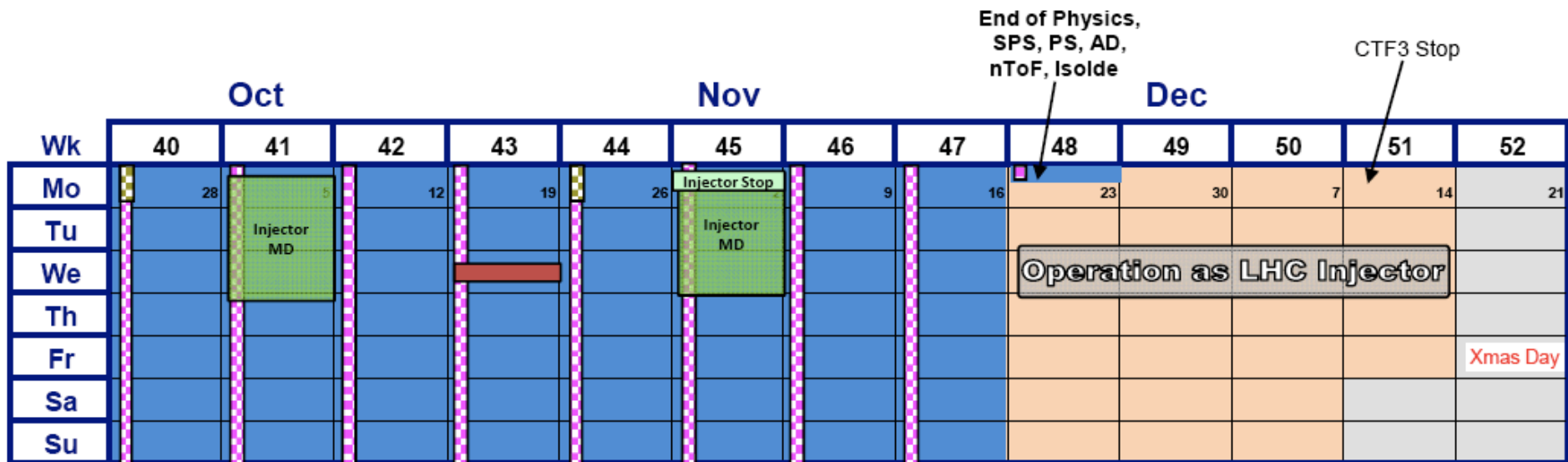
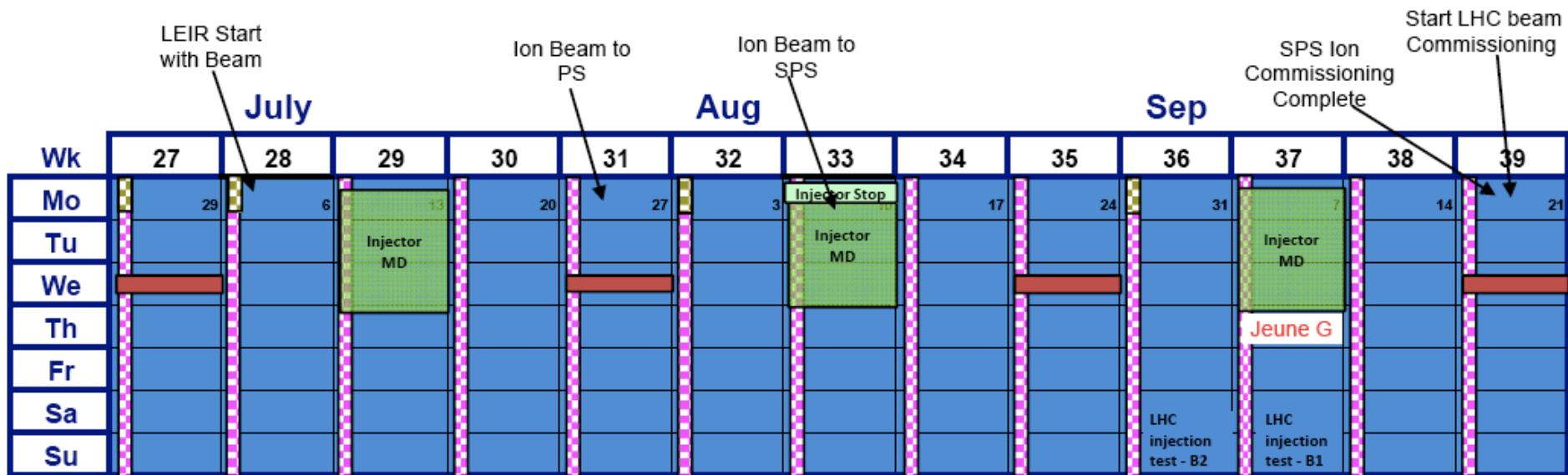
2009 Injector Accelerator Schedule

Approved by the Research Board 5th December 2008



WE ARE HERE!

1 day added for setting-up of crystal collimation cycle



- Injector Complex MD Block
- 8-hour Wednesday MD
- Technical Stop for the Injector Chain
- AD Physics
- AD Setting-up & Studies

SUMMARY OF THE REQUIRED BEAMS / SPS CYCLES

- ◆ **W25: Nominal LHC beam at SPS entrance**
- ◆ **SPS // MDs**
 - 55 GeV/c cycle with a FT longer than 5s
- ◆ **SPS Long MDs**
 - LHC nominal 450 GeV/c
 - 120 GeV/c coastable
 - (ion cycle called ION-L18000_V1 in 2007, 18 s long = 15 BPs)

USE OF THE SPS CYCLES IN THE DIFFERENT LONG MDs

- ◆ W25 (96 h): **LHC nom. 450 GeV/c (72 h) + 120 GeV/c coast (24 h)**
- ◆ W29 (72 h): **120 GeV/c coast**
- ◆ W33 (64 h): **120 GeV/c coast + ion cycle (to check HW etc.)**
- ◆ W37 (72 h): **120 GeV/c coast + ion cycle + LHC nom. 450 GeV/c**
- ◆ W41 (72 h): **120 GeV/c coast + LHC nom. 450 GeV/c**
- ◆ W45 (64 h): **120 GeV/c coast + LHC nom. 450 GeV/c**

MTE AND IONS

◆ MTE

- During the weeks 22 and 23 there will be either MTE or LHCFAST but no other MD (to keep a reasonable duty cycle)
- // MDs will start in the SPS in week 24

◆ IONS

- Some dedicated time has been reserved during the Long MD blocks of weeks 33 and 37

DETAILED MD PLANNING ON THE WEB

→ <https://ab-mgt-md-users.web.cern.ch/ab-mgt-md-users/>