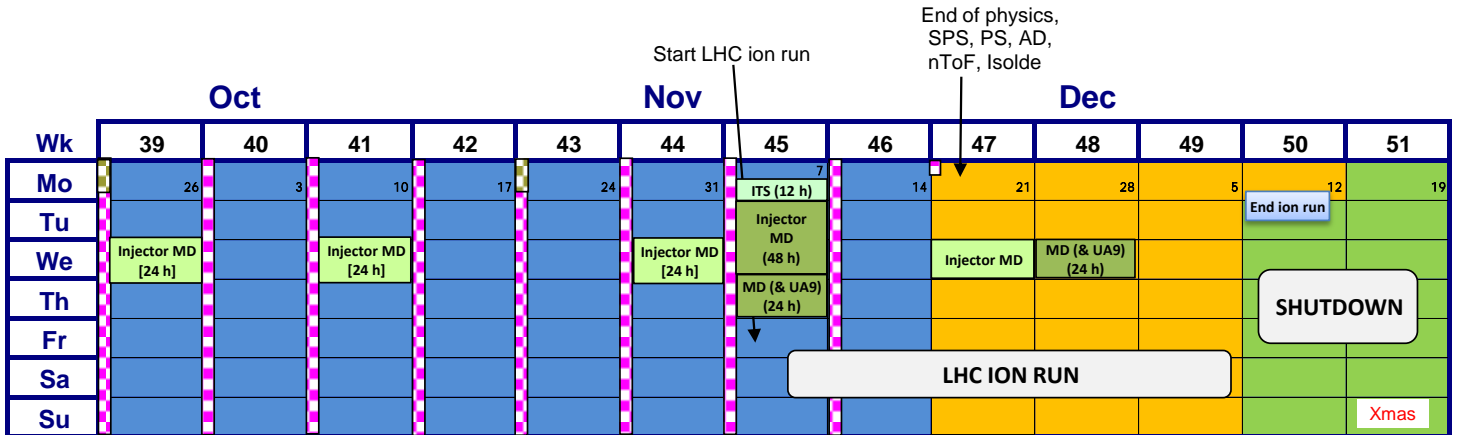
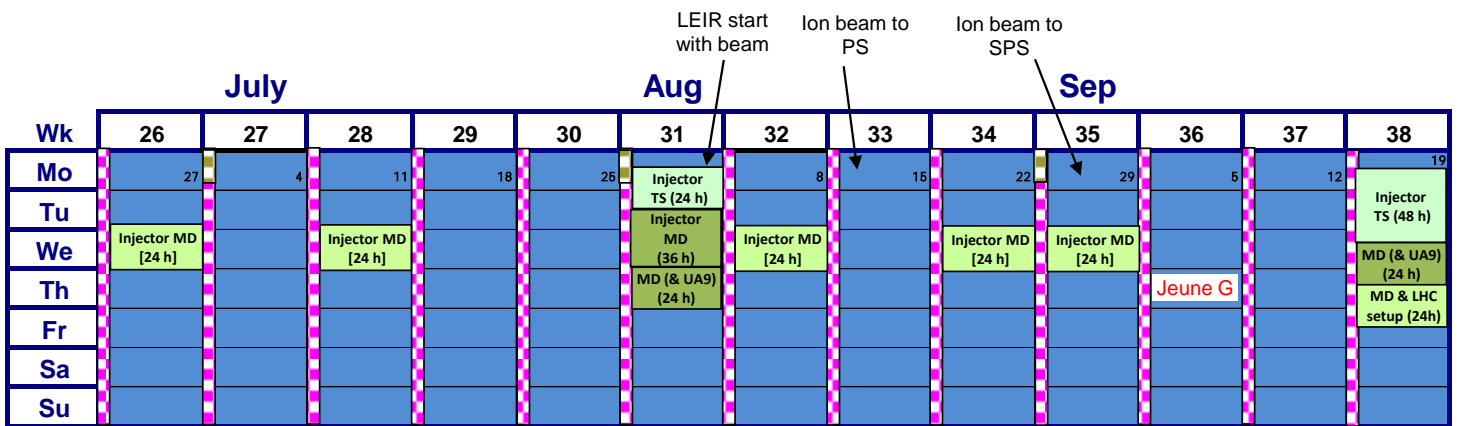
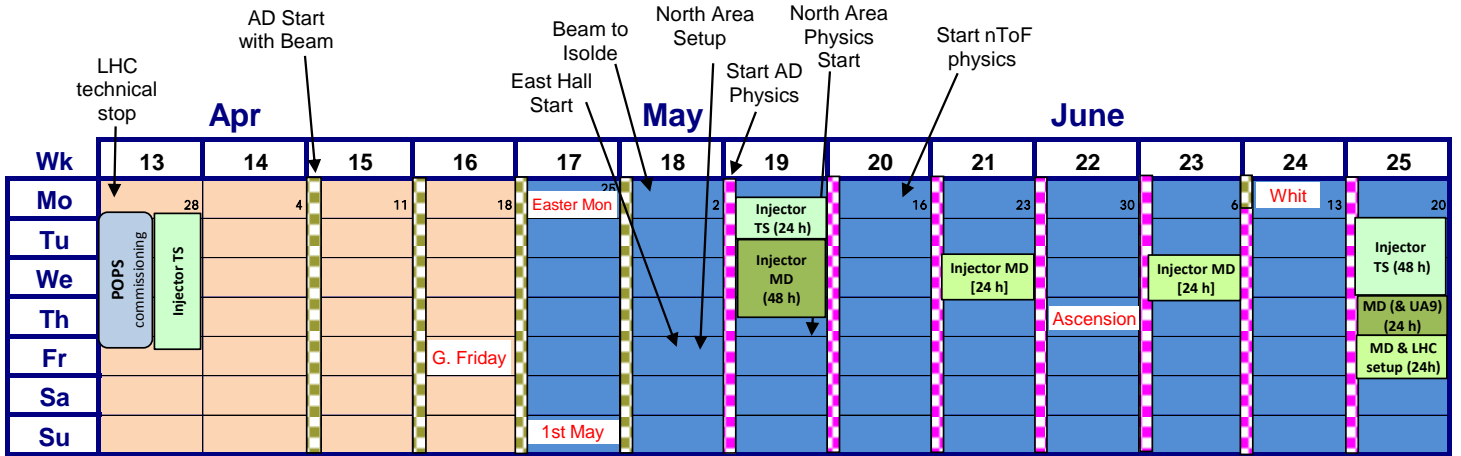
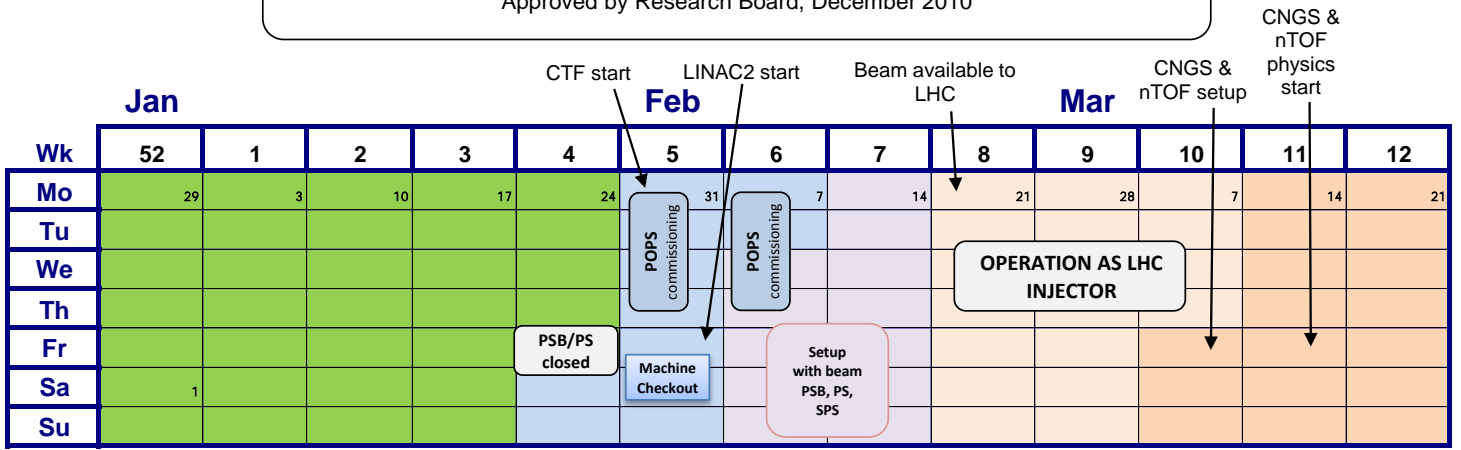


# 2011 Injector Accelerator Schedule

Approved by Research Board, December 2010



- Injector Complex MD Block
- Injector Stop      Technical stop for the Injector Chain
- Injector MD      Floating injector MD - LHC beam has priority
- AD Physics
- AD Setting-up & Studies

Injector technical stops and scheduled MD take place during LHC technical stops